

# Apps and Traps 5/16/2011

## Snow Leopard Tricks

### **Allow Dashboard Widgets to be Dragged Onto the Desktop**

Sometimes it's useful to keep one of your Dashboard widgets around after you close Dashboard, so paste the following into Terminal:

```
defaults write com.apple.dashboard devmode YES && killall Dock
```

To use this ability, click and hold a widget and then close Dashboard using your keyboard hotkey (usually F12? on newer Macs).

### **Enable 'X-Ray Folders' in QuickLook**

The QuickLook feature of Finder is great, but if you use it on a folder, you won't see anything except a folder icon. Using this hidden setting, you'll be able to see the contents of the folder when you use QuickLook. If there are more than 5 items.. the Icons will Animate, rotating thru the entire collection!

```
defaults write com.apple.finder QLEnableXRayFolders 1 && killall  
Finder
```

To turn off, replace the '1' with a '0'.

<http://secrets.blacktree.com/> ... for even MORE Secrets!

## **Faster WIFI?**

With the New Thunderbolt Macs you have the ability to speed up your WIFI transfers by 50%.

Here's how....

<http://www.appleinsider.com/articles/11/05/06/>

[mac\\_os\\_x\\_10\\_7\\_lion\\_to\\_support\\_450\\_mbps\\_wifi\\_on\\_2011\\_thunderbolt\\_macbook\\_pro\\_imacs.html](http://www.appleinsider.com/articles/11/05/06/mac_os_x_10_7_lion_to_support_450_mbps_wifi_on_2011_thunderbolt_macbook_pro_imacs.html)

Mac OS X Snow Leopard, non-Thunderbolt MacBook Pro  
2.4GHz

5GHz wide network

AirPort: On  
Turn AirPort Off

AirPort: On  
Turn AirPort Off

✓RDM

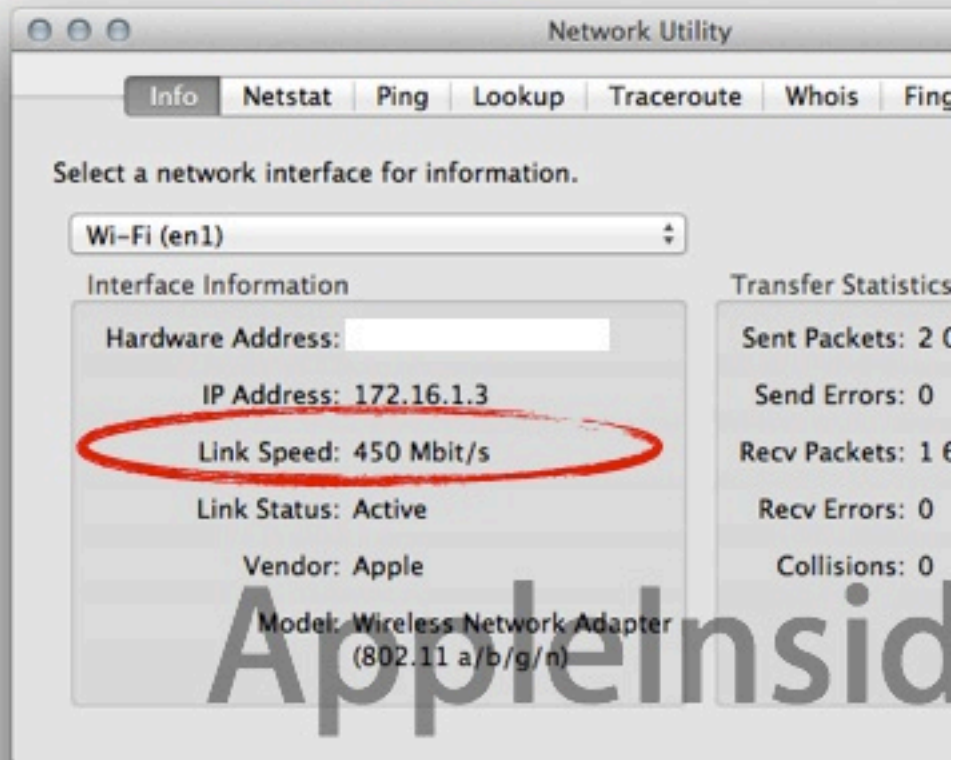
PHY Mode: 802.11n  
BSSID: 0:19:e3:33:41:9f  
Channel: 1 (2.4 GHz)  
Security: WPA2 Personal  
RSSI: -55

Transmit Rate: 130  
MCS Index: 15

✓RDM-N

PHY Mode: 802.11n  
BSSID: 0:1f:5b:88:19:1d  
Channel: 149 (5 GHz)  
Security: WPA2 Personal  
RSSI: -64

Transmit Rate: 300  
MCS Index: 15



iOS Apps for 5/16/2011

RoadAhead, Diagnostic PADD, Star News, Qwiki, Zite, Crackle, Catalog  
Spree, robick, Vintate-Radio, Planetary, The Mountain

